



Incidence of common aerobic microbiological agents and outcome of ulcerative keratitis in patients who refer to Ahvaz Imam Khomeini hospital

Mahmoud-Reza Panahi-bazaz¹, Mojtaba Moosavian², Effat Abbasi-Montazeri², Soheila Gheitaran^{*4}

1. *Infectious and Tropical Diseases Research Institute, Ahvaz Jundishapur University of Medical sciences, Ahvaz Iran.*
2. *Department of Microbiology, school of medicine, Ahvaz Jundishapur University of Medical sciences, Ahava, Iran.*
3. *Department of ophthalmology, Ahvaz Jundishapur university of Medical sciences, Ahvaz, Iran.*

Abstract

To evaluate the incidence of common aerobic microbiological agents and outcome of ulcerative keratitis in patients who refer to Ahvaz Imam Khomeini hospital during a year. Patients presenting with suppurative corneal ulcer to ophthalmology emergency center of Imam Khomeini Hospital of Ahvaz University of medical science from October 2015 to October 2016 were prospectively followed. Demographic data, risk factors and clinical sign were carried out. Visual acuity measured and converted to logarithm of the minimum angle of resolution (logMAR). Corneal scraping was performed and obtained material was smeared on glass slide for gram stain. material obtained from corneal scraping transferred to platinum loop and wet swab. platinum loop smeared on chocolate agar and wet swab transferred into liquid tryptic soy broth (TSB). Blade directly inoculated in sabour aud dextrose agar (SDA). empirical treatment started and patients were followed up after 1 week, 2 weeks, 1 month and 2 months. The most of the patients were between 60 to 80 years old and only three patients were under 40 years old. The commonest predisposing factor was Ocular surface disease (OSDs) followed by prior ocular surgery and trauma. The coagulase negative staphylococcus was the commonest microorganism (38.9%). Average log MAR BCVA at the enrolment and 2 month of treatment was respectively 1.99 and 1.84, this difference was statistically significant ($p=0.01$). We revealed that patients who were between 60-80 years old were more susceptible to the ulcerative keratitis, moreover, the commonest predisposing factor for suppurative keratitis was ocular surface disease (OSDs) and prior ocular surgery. coagulase negative staphylococcus was the commonest agent and average logMAR BCVA was improved with treatment.

Keywords: suppurative keratitis, ulcerative, keratitis, prospective, Iran

Full-length article

**Corresponding Author, e-mail: research_inst@yahoo.com*

1. Introduction

Microbial keratitis is a significant cause of corneal blindness and visual impairment throughout the world [1]. It can be caused by a range of pathogens including bacteria, viruses, protozoa and fungi [2,3]. Corneal ulcer is a sight-threatening condition that requires prompt diagnosis and treatment to prevent unfavorable outcomes [4]. The most prevalent symptoms and signs are pain, photophobia, redness, anterior chamber reaction, corneal infiltration and corneal edema [5]. In patients with untreated supportive keratitis, the symptoms can be more severe including

endophthalmitis, corneal perforation, and blindness [5]. Depending on the region, several groups of pathogens are involved in the suppurative bacterial keratitis such as gram positive, gram negative, aerobic and anaerobic microorganisms and fungus [6]. Bacterial keratitis is a rare condition in normal eyes, however, prior ocular surgery, trauma, contact lens wear, dry eye, ocular surface disorder (OSDs) and immunosuppression are the most important predisposing factors [7]. Geographically, the risk factors of bacterial keratitis vary, for example in the developed

countries the most important risk factor is contact lens and in the developing countries, trauma is the common cause [8]. The incidence of suppurative keratitis varies from 11 per 100,000 in developed countries such as United States of America to 299 per 100,000 in developing countries such as India [9]. The rapid initiation of empirical and then targeted treatment is crucial. The choice of a targeted drug depends on the culture result and drug resistance of the cultured microorganism [10]. Therefore, the laboratory evaluation of ulcerative keratitis is essential to perform the right diagnosis and treatment. We conducted this prospective study to define the clinical demographic state, risk factor, microbiological pattern and visual outcome of ulcerative keratitis in patients who refer to Ophthalmology Emergency Center of Ahwaz Imam Khomeini hospital during a year.

2. Material and method

This study was approved by the ethic committee of Ahwaz university of medical sciences, moreover, the study procedure was explained to all patients and written informed consent was obtained. All patients who were diagnosed with corneal ulcer presenting to ophthalmology emergency center of Imam Khomeini hospital of Ahwaz university of medical science from October 2015 to October 2016 were included in this prospective study. Inclusion criteria were any patient with suppurative corneal stromal infiltration with overlying corneal epithelial defect in central 3 mm of cornea that greater than or equal to 1mm in size, peripheral ulcer more than 2 mm and peripheral ulcer less than 2 mm in the presence of anterior chamber reaction.

Exclusion criteria were patient with viral keratitis, acanthamoeba keratitis, sterile keratitis like vernal keratopathy and marginal keratitis, age below 18 years, who were unable to provide consent, no light perception (NLP) visual acuity at the time of refer and history of taking more than one species of topical antibiotic.

The patients were interviewed, and demographic data include name, sex, age, and location of life were recorded. The history of predisposing factor including prior ocular surgery, history of ocular trauma and type of trauma, history of contact lens wearing, use of topical corticosteroid, keratorefractive surgery and systemic disease like diabetes were listed. Visual acuity was measured using the Snellen chart at a distance of 4 meters and then converted to the logarithm of the minimal angle of resolution (log MAR). For patients with severe vision loss including counting fingers (CF), hand motions (HM), light perception (LP) and no light perception (NLP) were recorded as LogMar values 1.875, 2.700, 2.301 and 3.000 respectively [11, 12].

Full ophthalmologic examination was performed using slit lamp and eyelid examination was carried out and trichiasis, distichiasis, entropion, ectropion, dacryocystitis and meibomian gland dysfunction (MGD) was evaluated. The size (largest diameter) and depth of corneal stromal infiltration and corneal epithelial defect measured in millimeter. Location of ulcer was drawn based on the corneal zone (central 3mm, peripheral, total cornea). Thinning, descemetocele and vascularization of the cornea were evaluated and anterior chamber examination for cell and hypopyon was done.

Panahi-bazaz et al., 2023

After full ocular examination, corneal scraping from edge of infiltration under sterile condition with the help of slit lamp was performed. The cornea was anesthetized using tetracaine 0.5% and corneal scraping was performed with a sterile Bard- Parker surgical blade number 15. Some of the collected material transferred to a platinum loop and some to a sterile wet cotton swab. Platinum loop smeared onto glass slide the surface of the chocolate agar. wet cotton swab transferred to tryptic soy broth (TSB). Remained materials on blade directly inoculated in sabouraud dextrose agar (SDA). The samples were sent to microbiology laboratory of Ahwaz Jundishapour University of medical science and incubated at 37°C for 24 to 48 hours. Then swab was removed from liquid TSB medium and cultured on the diagnostic media such as blood agar and chocolate agar, then incubated at 37°C for 24 hours again. To isolate gram-positive from gram-negative bacteria, the bacteria were stained (gram staining) and cultured on the McConkey agar, mannitol salt agar and bile esculin agar. If isolated bacteria were gram positive then identified with specific tests such as MSA, DNase, coagulase and catalase and if it was negative, a differential tube such as TSI, citrate, malonate, SIM, and lysine decarboxylase was used. Finally, for all isolated bacteria, antimicrobial susceptibility test was performed based on the Clinical and Laboratory Standards Institute (CLSI) guideline. Antibiotics, including ciprofloxacin, co-trimoxazole, vancomycin, amikacin, gentamicin, rifampin, cefazolin and bacitracin was used for gram-positive bacteria and ceftazidime, ciprofloxacin, imipenem and meropenem for gram negative.

For fungal cultures inoculated SDA incubated at room temperature and was inspected daily for up to 14 days and declared as fungal culture negative after two weeks. Empirical medical therapy was started for all patients immediately after the corneal scraping. For all patient treatment with a fluoroquinolone (ciprofloxacin or levofloxacin) had been started and for moderate to severe case fortified eye drop added. For patients who were suspected to have fungal keratitis based on clinical features, natamycin eye drop had been started. All the patients were given homatropine 1% eye drop, 2gram oral vitamin C daily and doxycycline capsule 100 milligram Bd.

2.1. Statistical Analyses

The data were analyzed using Statistical Package for Social Studies version 20.0 (SPSS Inc, Chicago, Ill). Categorical data are presented as numbers (%), and continuous data as mean \pm SD. We used the Chi₂ test to compare categorical variables and the Student's t test to compare continuous variables. $P < 0.05$ was considered significant.

3. Results and discussions

3.1. Demographics

During one year, 54 patient were examined in emergency department of ophthalmology, ahwaz imam khomeini hospital with a corneal infiltrate that was compatible with a diagnosis of suppurative keratitis. Thirty (55.6%) patients were admitted to the hospital for therapy while the other 24(44.4%) were treated in the outpatient clinic. Of these 24 patients ,14 needed hospitalization but did not consent to hospitalization. The time interval between the first symptom and presentation to hospital ranges from 0 to 11 days, (average 3.2 ± 3.7). The period of admission ranged from 7 to 36 days, (average 9 ± 11). 26 rural and 28 urban patients (28 males, 26 females) were studied. The average age was 64.63 ± 13.77 years, ranging from 22 to 85 years. Most of the patients were between 60 to 80 years old (63%) and only three patients were under 40 years old. All 54 patients had unilateral corneal ulcer, 28(51.9) in right eye and 26(48.1) in left eye. Interestingly, the number of cases during autumn time was significantly less than other seasons.

3.2. Predisposing factor

The commonest predisposing factors were Meibomian gland dysfunction (79.6%), prior eye surgery (40.7%) and trauma (13%). cataract extraction in 17 (31.4%), penetrating keratoplasty combined with cataract extraction in 3(5.6%), vitreoretinal surgery combined with cataract extraction in 2(3.7%) patients. There was a history of trauma in 7 (13%) patients. Mineral particle in 4 patients, trauma with fingernail in 2 patients and organic material(vegetable) in 1 patient. eye lid abnormality includes entropion in 3 (5.6%) and ectropion in 1(1.9%) patient were observed. 6 patients had diabetes mellitus and 1 patient had malignancy(lymphoma). Moreover, ulcerative keratitis occurred in three patients with history of contact lens wearing.

3.3. Clinical sign

Most common location of ulcer was in central 3 mm (88.9%) and 85.1% had size large than 3mm (table 2).

3.4. SMEAR

The smear was negative in 23 patients, however, in the smear positive patients (57.4%) the most prevalent microorganism was gram- positive cocci (26,48.1%). gram - negative bacilli (5.5%) and gram-positive bacilli (3.7%) also positive in 5 patients.

3.5. Culture

The culture did not growth in 13(24%) patients. among 41(76%) patients with positive culture the coagulase negative staphylococcus was the commonest organism (21 patients). staphylococcus aureus in 4 patients, pseudomonas

in 3 patients, gram positive bacilli in 3 patients, gram negative bacilli (enterobacter) in 1 patient and corynebacterium in 1 patient. Also in 2 patients grew both coagulase negative staphylococcus and staphylococcus aureus and in 3 patient both coagulase negative staphylococcus and enterococcus. fungi isolated in 3 patients, 2 fusarium and 1 yeast.

3.6. Antibigram

Among antibiotics, most of the patients was sensitive to the ciprofloxacin, amikacin, gentamycin, rifampin and cefoxitin, on the other hand, resistance to the cotrimoxazole among the patients was more than other antibiotics (Table 2).

3.7. Treatment outcome

Treatment was considered successful where the stromal infiltration resolved and overlying corneal epithelium healed completely (with or without scar). Out of 54 patients, 46 (85.1%) patients achieved good outcome in form of complete healing of corneal infiltration which among them only 3 patients healed without scar and 43 patients had dense stromal corneal scar. Enucleation was performed for 2 patients, conjunctival flap for 4 patients and penetrating keratoplasty for 2 patients.

3.8. Visual outcome

At the time of inrollment ,14 patients had LP vision, 10 HM in 30cm, 13 CF in 30 cm and 17 patients had vision between 20/200 to 20/800. Average LogMar BCVA at the time of inrollment was 1.99 and after one week of treatment was 1.92. It means that 3.5 letters increased in LogMar chart and difference was statistically significant ($p = .0001$). average LogMar BCVA after 2 weeks, 1 month and 2 months respectively was 1.89, 1.85 and 1.84 and LogMar BCVA after 2 month increased 2 line in LogMar chart and difference was statistically significant ($P = .013$).

Table 1: The patients' characteristics and predisposing factors

Variables	Subtype	N %
Sex	Male	28(51.9%)
	Female	26(48.1%)
Age	20-39	3(5.6%)
	40-59	12(22.2%)
	60-79	34(63%)
	>80	5(9.3%)
Location	Rural	26(48.1%)
	Urban	28(51.9%)
Eye	Right	28(51.9%)
	Left	26(48.1%)
Hospitalization	Yes	30(55.6%)
	No	24(44.6%)
Trauma	No	47(87%)
	Mineral particle	4(7.4%)
	Finger nail	2(3.7%)
	vegetable	1(1.9%)
Surgery	No	32(59.2%)
	Cataract extraction	17(31.4%)
	Vitreoretinal surgery and cataract extraction	2(3.7%)
	Penetrating keratoplasty and cataract extraction	3(5.6%)
Diseases	No	47(87%)
	Diabetes	6(11.1%)
	malignancy	1(1.9%)
Contact lens wear		3(5.6%)
Meibomian gland dysfunction		43(79.6%)
Entropion		3(5.6%)
Ectropion		1(1.9%)

Table 2: Clinical sign of ulcerative keratitis

Sign		N(%)
Location	Central	48(88.9)
	Peripheral	6(11.1)
Depth	>30%	48(88.9)
	<30%	6(11.1)
Size	<3 mm	8(14.8)
	>3mm<6mm	23(42.6)
	>6mm	23(42.6)
A/C reaction		8(14.8)
Hypopion		16(30)

Table 3: Smear, culture and antibiogram

Smear	Gram positive cocci	26(48.1%)
	Gram positive bacillus	2(3.7%)
	Gram negative bacillus	3(5.5%)
	Negative	23(42.6%)
Culture	No growth	13(24%)
	Coagulase negative staphylococcus	21(38.8%)
	Staph aureus	4(7.4%)
	Pseudomonas	3(5.5%)
	Gram positive bacillus	3(5.5%)
	Enterococcus and coagulase negative staphylococcus	3(%)
	Corynebacterium	1(1.8%)
	Fusarium	2(3.7%)
	Yeast	1(1.8%)
	Staph aureus and coagulase negative staphylococcus	2(3.7%)
Cefoxitin	Sensitive	26(48.1%)
	Resistance	2(3.7%)
Rifampin	Sensitive	27(50.0%)
	Resistance	2(3.7%)
Cotrimoxazole	Sensitive	6(11.1%)
	Resistance	23(42.6%)
Gentamycin	Sensitive	33(61.1%)
	Resistance	0
Vancomycin	Sensitive	17(31.5%)
	Resistance	0
Ciprofloxacin	Sensitive	25(46.3%)
	Resistance	2(3.7%)
Azithromycin	Sensitive	14(25.9%)
	Resistance	20(37%)
Amikacin	Sensitive	26(48.1%)
	Resistance	3(5.6%)
Imipenem	Sensitive	4(7.4%)
	Resistance	0
Meropenem	Sensitive	4(7.4%)
	Resistance	0
Levofloxacin	Sensitive	4(7.4%)
	Resistance	
Norfloxacin	Sensitive	3(5.6%)
	Resistance	0
Cefotaxime	Sensitive	1(1.9%)
	Resistance	2(3.7%)
Cefepime	Sensitive	1(1.9%)
	Resistance	3(5.6%)
Ceftazidime	Sensitive	1(1.9%)
	Resistance	2(3.7%)

Table 4. Univariate analysis of factors effective on visual acuity during follow-up period using linear regression model

Variable	LogMAR At inrollment		logMAR after 1 week		logMAR after 2 weeks		LogMAR AFTER 1 MONTH		Log mar After 2 month	
	Regression Coefficient	P value	Regression Coefficient	P value	Regression Coefficient	P value	Regression Coefficient	P value	Regression Coefficient	P value
Age	0.02	<0.001**	0.03	<0.001**	0.03	<0.001**	0.03	<0.001**	0.03	<0.001**
Sex										
Male	1*	-	1	-	1	-	1	-	1	-
Female	-0.46	0.002**	-0.53	0.002**	-0.45	0.02**	-0.49	0.01**	-0.48	0.01**
Time hospital stay	-0.01	0.59	-0.01	0.35	-0.01	0.52	-0.01	0.45	-0.01	0.39
Hospitalization										
No	1	-	1	-	1	-	1	-	1	-
Yes	0.01	0.95	-0.04	0.83	-0.01	0.94	-0.03	0.89	-0.05	0.81
Culture										
not growth	1	-	1	-	1	-	1	-	1	-
coagulase neg. staph	0.02	0.90	0.08	0.82	0.07	0.78	0.04	0.86	0.05	0.86
Staph aureus	-0.29	0.34	-0.32	0.39	-0.39	0.30	-0.49	0.21	-0.50	0.20
Pseudomonas	-0.34	0.36	-0.40	0.37	-0.29	0.53	-0.27	0.58	-0.39	0.42
gram pos.bacillus	0.08	0.82	0.06	0.90	0.07	0.87	0.10	0.83	0.11	0.82
Enterococcus	-0.17	0.70	-0.12	0.82	-0.16	0.78	-0.13	0.82	-0.12	0.83
Corinebacterium	-0.77	0.21	-0.57	0.43	-0.56	0.47	-0.53	0.50	-0.62	0.42
fusarium	-0.02	0.97	0.23	0.67	0.19	0.73	0.22	0.69	0.28	0.62
yeast	-0.19	0.75	-0.09	0.90	-0.46	0.55	-0.43	0.58	-0.42	0.59
staph aureus and coag.neg.staph	-0.30	0.42	-0.30	0.49	-0.39	0.41	-0.36	0.45	-0.35	0.46
Smear										
Negative	1	-	1	-	1	-	1	-	1	-
g p cocci	0.03	0.84	-0.03	0.86	-0.09	0.66	-0.12	0.54	-0.14	0.48
g p ba	-0.58	0.16**	-0.82	0.09**	-0.86	0.09**	-0.99	0.05**	-0.99	0.05**
g n b	-0.28	0.41	-0.61	0.13**	-0.64	0.13**	-0.62	0.15**	-0.61	0.16**

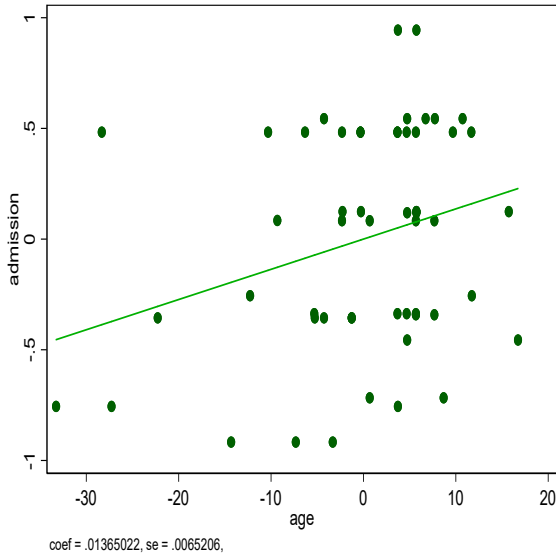


Fig 1. The relation between age and Log MAR BCVA at enrollment in multivariate model.

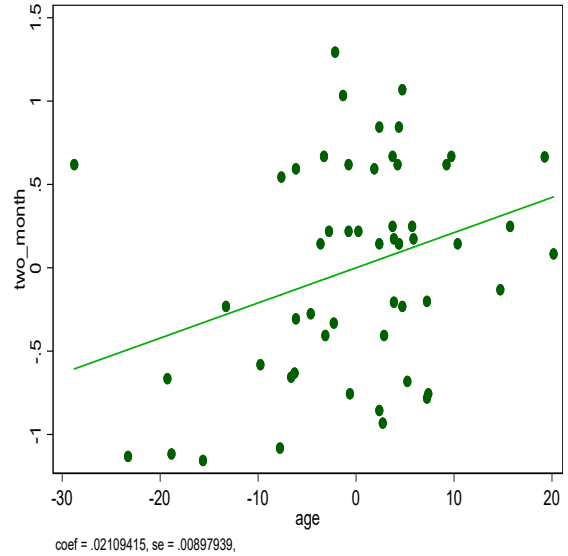


Fig 2. The relation between age and LogMAR BCVA after 2 months in multivariate model

4. Conclusion

We revealed both genders tend to develop corneal ulcer between 60-80 years old. The present study demonstrated that the commonest predisposing factor for suppurative keratitis was ocular surface disease (OSDs) and prior ocular surgery followed by and the most prevalent pathogen was coagulase negative staphylococcus.

5. Limitations

The study was carried out in a tertiary referral center and therefore was treating a high portion of more difficult and sever cases.

Acknowledgements

We are grateful to all patients who participated in this study for their contribution to the maintenance of our patient record without which this project would have been impossible(ir.AJUMS.REC.1394.584).

References

[1] S.M. Parjina N.V. Srinivasan, M. Mascarenhas, J. Lalitha, P. Rajaraman R. Oldenberg C.E., Obrien, K.S. Ray, K.J.

Acharya, N.R. Lietman, T.M. Keenan, J.D. (2014). Visual Outcome in Treated Bacterial Keratitis: Four Years of Prospective Follow Up. IOVS. 55 (5) 2935-2940.

[2] A.K. Leck, P.A. Thomas, M. Hagan, J. Kaliampurthy, E. Ackuaku, M. John, M.J. Newman, F.S. Codjoe, J.A. Opintan, C.M. Kalavathy, V. Essuman, C.A. Jesudasan, G.J. Johnson. (2002). Aetiology of suppurative corneal ulcers in Ghana and south India, and epidemiology of fungal keratitis. British Journal of Ophthalmology. 86(11):1211-5.

[3] S. Arunga, G.M. Kintoki, J. Mwesigye, B. Ayebazibwe, J. Onyango, J. Bazira, R. Newton, S. Gichuhi, A. Lech, D. Macleod V.H. Hu VH, M.J. Burton. (2020). Epidemiology of microbial keratitis in Uganda:A Cohort Study. Ophthalmic Epithalmic. 27(2)121-131.

[4] M.D. Lakra, A.K. Pathak, S. Murmu. (2020). Study on Demographic Correlate of Corneal Ulcer Among Patients Attending the Tertiary Care Hospital of Jharkhand. International Journal of Contemporary Medical Research section: ophthalmology 7.7.2.

[5] H.B. Ostler, C.W. Mitchell. (1995). Disease of the external eye and adnex. Baltimore: Williams and Wilkins. p.137-252.

- [6] S.D. McLeod. Bacterial Keratitis. In: Myron Yanoff, Jay S Duker, editors. (2008). *Ophthalmology*. 3rd ed. Mosby. 262-70.
- [7] J.C. Erie, M.P. Nevitt, D.O. Hodge et al. (1993). Incidence of ulcerative keratitis in defined population from 1950 through 1988. *Archives of Ophthalmology*. 111: 1665–1671.
- [8] M.P. Upadhyay, P.C. Karmacharya, S. Koirala et al. (2001). Bhaktapur eye study: ocular trauma and antibiotic prophylaxis for the prevention of corneal ulceration in Nepal. *British Journal of Ophthalmology*. 85: 288–292.
- [9] B. Khanna, M. Deb, A. Panda, H. Sethi. (2005). Laboratory diagnosis in ulcerative keratitis. *Ophthalmic Research*. 37(3):123-7.
- [10] K. Ulfik, S. Teper, M. Dembski, A. Nowinska, E. Wroblewska-Czajka, E. Wylegala. (2020). Seven Year Analysis of Microbial Keratitis Tendency at an Ophthalmology Department in Poland. A Single –Center Study. *Hindawi Journal of Ophthalmology*. ID8851570,10 Pages.
- [11] K. Pakzad-Vaezi, S.D. Levasseur. S. Schendel, S. Mark, R. Mathias, D. Roscoe, S.P. Holland. (2015). The Corneal Ulcer One-Touch Study: A Simplified Microbiological Specimen Collection Method. *American Journal of Ophthalmology*. 159(1);37-43.
- [12] K. Schulze-Bonsel, N. Feltgen, H. Burau, L. Hansen, M. Bach. (2006). Visual acuities ‘hand motion’ and ‘counting fingers’ can be quantified with the Freiburg visual acuity test. *Investigative Ophthalmology & Visual Science* 47(3):1236–1240.
- [13] S. Basak, S. Basak, A. Mohanta, A. Bhowmick. *Epidemiological & Microbiological Diagnosis of suppurative keratitis in Gangetic West Bengal, Eastern India*. *Indian Journal of Ophthalmology*. 2005; 53:17-22.
- [14] A.P. Thomas, K.A. Leck, M. Myatt. (2005). Characteristic clinical features as an aid to the diagnosis of suppurative keratitis caused by filamentous fungi. *British Journal of Ophthalmology*. 89:1554-1558
- [15] A. Panda, R. Ahuja, and S. Srinivas Shastri. (1999). Comparison of topical 0.3% of ofloxacin with fortified tobramycin and fortified tobramycin and fortified cephazolin in treatment of bacterial keratitis: *Eye*. 13;744-747.
- [16] K. Ravinder, M. Venu Madhav, J. Archana, J. Pandurang. (2016). Clinical Evaluation of Corneal Ulcer among Patients Attending Teaching Hospital. *International Journal of Contemporary Medical Research*. 3(4): 2393-91.
- [17] S.A. Rajappa, J. Shaji. (2015). A Clinical Study of Suppurative Keratitis. *International Journal of Biomedical Research*. 6(11): 869-873.
- [18] M.R. Shoja, M. Manaviat. (2004). Epidemiology and outcome of corneal ulcer in Yazd Shahid Sadoughi Hospital. *Iranian Medical Act*. 42(2): 136-41.
- [19] N. Carnt, J.J. Hoffman, S. Verma, S. Hau, S.F. Radford, D.C. Minassian, J.K.G. Dart. (2018). Acanthamoeba keratitis: confirmation of the UK outbreak and a prospective case control study identifying contributing risk factors. *British Journal of Ophthalmology*. 2018;1-35.
- [20] N. Carnt, R. Robaei, D.C. Minassian, J.K.G. Dart. (2017). Acanthamoeba keratitis in 194 patients: risk factors for bad outcomes and severe inflammatory complications. *British Journal of Ophthalmology*. 2017-310806.
- [21] A.A.A. Marcos, D.S. Barros, G.N. Moraes, E. Cukierma, A.S.C. Junior. (2018). Epidemiological Profile of the Contact Lens Sector of the Benjamin Constant Institute in Rio de Janeiro. *Brazilian Journal of Ophthalmology*. 77 (6): 338-41.
- [22] D.S.J. Ting, C.S. Ho, R. Deshmukh, D.J. Said, H.S. Dua. (2021). Infectious keratitis: an update on epidemiology, causative microorganism, risk factor, and antimicrobial resistance. *The royal college of ophthalmologist*.35;1084-1101.
- [23] B. Bourcier, F. Thomas, V. Borderie, C. Chaumeil, L. Laroche. (2003). Bacterial Keratitis: predisposing factors, clinical and microbiological review of 300 cases. *British Journal of Ophthalmology*. 87(7):834-38
- [24] F. Schaefer, O. Bruttin, L. Zografos. (2001). Bacterial keratitis: a prospective clinical and microbiological study. *British Journal of Ophthalmology*. 85:842-847
- [25] N. Al-Yousuf. (2009). Microbial keratitis in kingdom of bahrain: clinical and microbiology study. *Middle East African Journal of Ophthalmology*. 16(1):3-7. doi 10.4103/0974-9233.48855.
- [26] S. Patel, B. Badhu, B. Khanal, S. Chaudhary, S.K. Arya, K. Dhakhwa. (2013). Epidemiological as well as a

- microbiological profile of suppurative keratitis and its outcome a prospective hospital-based study from eastern Nepal. *Journal of Universal College of Medical Sciences*. 1(03):3-9
- [27] R. Somabhai Katara, N. Dhanjibhai Pate, M.A. Sinha. (2023). Clinical Microbiological Study of Corneal Ulcer Patients at Western Gujarat, India. *Iranian Medical Act*. 51(6): 399-403.
- [28] M.J.I. Bharathi, R. Ramakrishnan, R. Meenakshi, S. Padmavathy, C. Shivakumar, M. Srinivasan. (2007). Microbial keratitis in South India: influence of risk factors, climate, and geographical variation. *Ophthalmic Epidemiology*. Mar-Apr;14(2):61-9.
- [29] B. Sailaja, B. Lakshmi. (2016). Demographic profile of Suppurative keratitis. *IOSR-JDMS*. 15(8).01-5.
- [30] H. Leibowitz. (1991). Clinical evaluation of ciprofloxacin 0.3% ophthalmic solution for the treatment of bacterial keratitis. *American Journal of Ophthalmology*. 112: 34S-47S.
- [31] K.R. Wilhelmsu, R. Hyndiuk, D. Caldwell. (1993). 0.3% Ciprofloxacin ophthalmic ointment in the treatment of bacterial keratitis. *Archives of ophthalmology*. 111: 1210-18.
- [32] N. Gangopadhyay, M. Daniell, L.A. Weih, R. Taylor. (2000). Fluoroquinolone and fortified antibiotics for treatment of bacterial corneal ulcers. *British Journal of Ophthalmology*. 84: 378-84.